

SPECIFICATIONS

Power Jack

Mechanical

Connector Mating/Unmating Force : 0.30 to 3.0 Kg
Contact Retention Force : 1 Kg min.
Durability : 5,000 Cycles

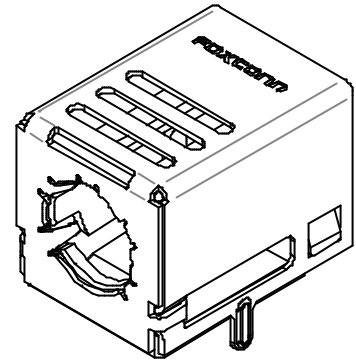
Electrical

Voltage Rating: 20V
Current Rating: 6A
Contact Resistance: Initial 30mW max. , After Testing: 50mW max.
Dielectric Withstanding Voltage: 500V AC/1 min.
Insulation Resistance: 100MW

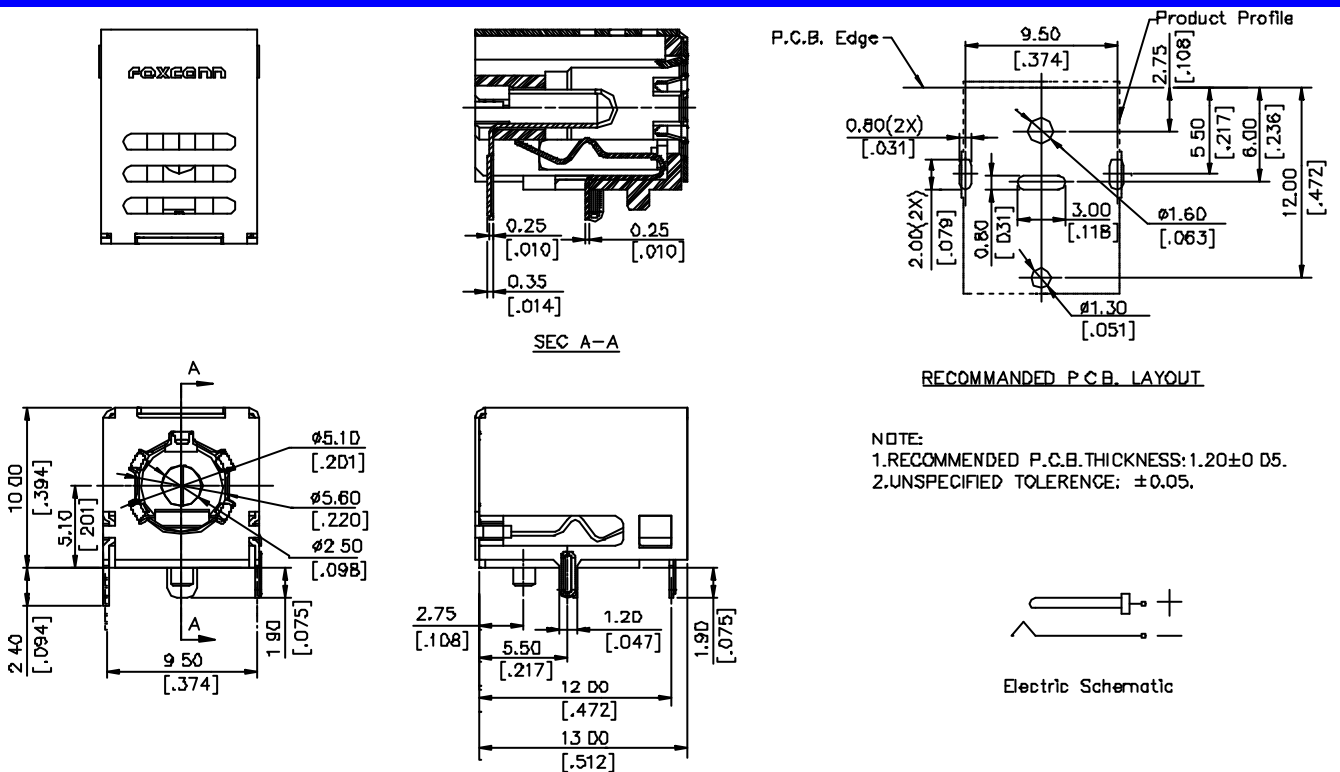
Physical

Housing: Thermoplastic, UL 94V-0 rated in Black Color
Contact: Copper alloy
Plating: See "ORDERING INFORMATION"
Solder Pad: Copper alloy
Operating Temperature: -35 to +65

JPD Series
Right Angle, T/H,
Receptacle Type
5.50/ 2.50 Diameter
Hook Type for Shell
Terminal



DRAWING



ORDERING INFORMATION

PRODUCT NO.: JPD 1 0 2 1 - W03 - **

