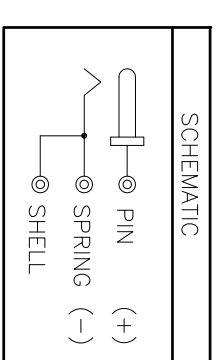
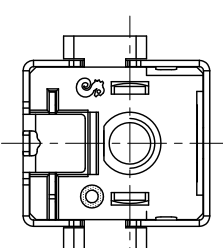
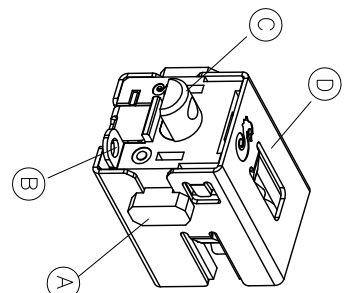


DC JACK 插入深度  
MATING PLUG  
(TOLERANCE ±0.05)



REV.	ECN NO.	OR DESCRIPTION	REVISED	DATE
A	PDR NO: 1090710-3A/3B	BOYE.QI	2010.01.08	
B	ECN NO:S100325	Tom	2010.05.24	
C	ECN NO:S101005	ANDY	2010.12.01	

P/N	DM A
2DC3005-001111	Ø2.50
2DC3005-000111	Ø1.65

NO	DESCRIPTION	QTY	MATERIAL	PLATING & COLOR
E	STOPPER	1	HIGH TEMP. THERMOPLASTIC,UL94V-0	BLACK
D	SHELL	1	STAINLESS, T=0.3	N/A
C	PIN	1	BRASS	G/F 1u" Min.
B	SPRING	1	PHOSPHOR BRONZE,T=0.30	Au 1u" Min. on Contact Area. Sn 100u" Min. on Solder Tail. Over Nickel 50u" Min. plating.
A	BODY	1	HIGH TEMP. THERMOPLASTIC,UL94V-0	BLACK

UNLESS OTHERWISE SPECIFIED TOLERANCES

DECIMALS: ANGLES:

X :±0.5 X :±2°  
X.X :±0.3 X.X :±1°  
X.XX :±0.2

Singatron Enterprise Co., Ltd.  
信譽企業股份有限公司




**DC POWER JACK**


DMW ANDY PART NO. 2DC3005-001111  
CHKD LUSSEN SCALE:4:1 UNIT: mm  
APVD TONY SIZE: A3 SHEET: 1 OF 2 REV:C

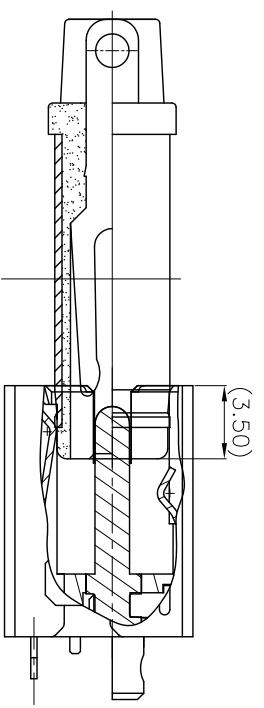
**CUSTOMER COPY**

REV.	ECN NO.	OR DESCRIPTION	REVISED	DATE
A	PDR NO: T090710-3A/3B		BOYE:OI	2010.01.08
B	ECN NO:S100325		Tom	2010.05.24
C	ECN NO:S101005		ANDY	2010.12.01

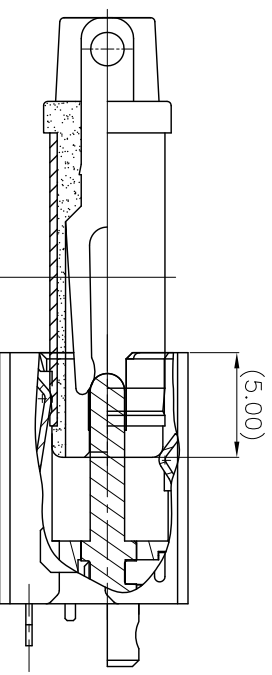
SPECIFICATIONS:

- ELECTRICAL CHARACTERISTICS:
  - RATING: 20V 7A
  - CONTACT RESISTANCE: 30mΩ MAX.(INITIAL)
  - DIELECTRIC WITHSTANDING VOLTAGE: 500V AC FOR ONE MINUTE.
  - INSULATION RESISTANCE: 100MΩ MIN. MEASURED BY 500 VDC
- MECHANICAL CHARACTERISTICS:
  - INSERTION/WITHDRAWAL FORCE(BEFORE) : 1.0~3.0 KG.
  - INSERTION/WITHDRAWAL FORCE(AFTER) : 0.5 KG MIN.
  - LIFE TEST: 10,000 CYCLES MIN.
  - TO CONFORM TO SINGATRON HAZARDOUS SUBSTANCE FREE SPEC.
  - GREEN PRODUCT IDENTIFICATION MARK ON JACK: 
  - GREEN PRODUCT IDENTIFICATION LABEL ON PACKAGING: 
  - PRINTED DATE CODE"  " ON TOP OF CONNECTOR.

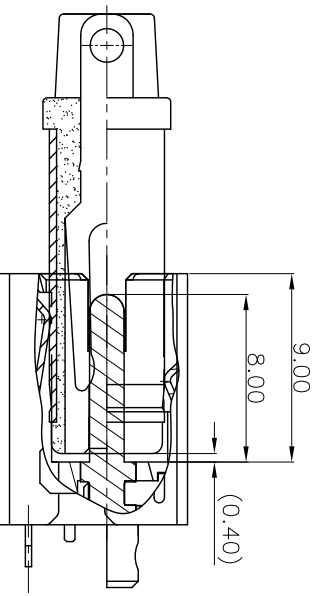
DATE CODE:   
 DD: DAY  
 MM: MONTH  
 YY: YEAR



<1.>WIPING DISTANCE FOR GROUND CONTACT




<2.>WIPING DISTANCE FOR POWER CONTACT



<3.>THE PLUG CAN INSERT THE CONNECTOR

MATING DRAWING

NO	DESCRIPTION	QTY	MATERIAL	PLATING & COLOR
UNLESS OTHERWISE SPECIFIED TOLERANCES				
DECIMALS: ANGLES:				
X	:±0.5	X	:±2°	
X.X	:±0.3	X.X	:±1'	
X.XX	:±0.2			
TITLE	DC POWER JACK			
DWN	ANDY	PART NO.	2DC3005-00	□111
CHKD	LUSSEN	SCALE:4:1	UNIT: mm	
APVD	TONY	SIZE: A3	SHEET: 2 OF 2	REV: C

CUSTOMER COPY