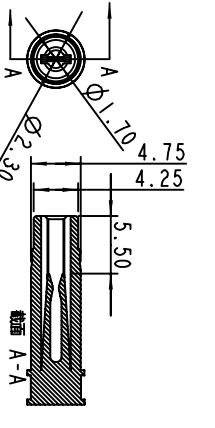
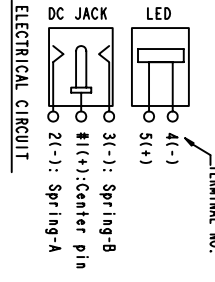
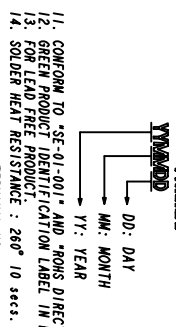


RECOMMEND P.C.B LAYOUT
(TOP VIEW TOL:±0.05mm)

REV.	ECN NO OR DESCRIPTION	REVISED	DATE
C	ECN NO. T070044	JASON	2007.04.02
D	ECN NO. T070107	DA	2007.04.12

- SPECIFICATIONS:
1. RATING: DC 20V 6A
 2. INSERTION FORCE: 0.8KG-2.5KG
 3. WITHDRAWAL FORCE: 0.8KG-2.5KG
 4. INSULATION RESISTANCE BETWEEN ANY ADJACENT TERMINALS SHALL NOT BE LESS THAN 100 MEGOHMS AT 50V VOLTS RESISTANCE BETWEEN ANY ADJACENT TERMINALS FOR ONE MINUTE
 5. CONTACT RESISTANCE SHALL NOT EXCEED 0.03 OHMS
 6. JACK SHALL WITHSTAND 5,000 CYCLES OF INSERTION AND WITHDRAWAL WITH TESTING PLUG AND CONTACT RESISTANCE SHALL NOT EXCEED 0.1 OHMS.
 7. MEASURING CONDITION: FROM 5°C TO 35°C
 8. RELATIVE HUMIDITY: FROM 40% TO 85%
 9. ENVIRONMENTAL SPECIFICATIONS:
 1. HUMIDITY TEST: HUMIDITY 90% TO 95% TEMPERATURE 40°C ± 2°C FOR 96 HOURS.
 2. HEAT TEST: TEMPERATURE 70°C ± 2°C (HUMIDITY BELOW 50%) FOR 96 HOURS.
 3. GOLD TEST: TEMPERATURE -40°C # 2°C FOR 96 HOURS.
 10. PACKING: 200C1000-01X111
 11. PRINTED DATE CODE "YNMDD" ON TOP OF CONNECTOR.



NO	DESCRIPTION	QTY	MATERIAL	PLATING & COLOR
I	TERMINAL	1	SUS 0.3T	N/A
H	SHELL	1	COPPER ALLOY 0.5T	NICKEL
G	LED	1	1ngdN	BLUE COLOR
F	SPRING-B	1	PBS 0.25T	Gold flash
E	GROUND	1	SUS	N/A
D	PIN	1	BRASS BAR	Gold flash
C	SPRING-A	1	PBS 0.3T	Gold flash
B	COVER	1	PA9T+30X6F	BLACK COLOR
A	BODY	1	PA9T+30X6F	BLACK COLOR

UNLESS OTHERWISE SPECIFIED TOLERANCES

DECIMALS: ANGLES:

X : ±0.5 X : ±2°
X.X : ±0.3 X.X : ±1°
X.XX : ±0.2

Singatton Enterprise Co., Ltd.
信音企業股份有限公司

DC POWER JACK (90W) + LED

PART NO. 2DC1000-01X111

SCALE: 2:1 UNIT: mm

SIZE: A3 SHEET: 1 OF 1 REV: D

CUSTOMER COPY