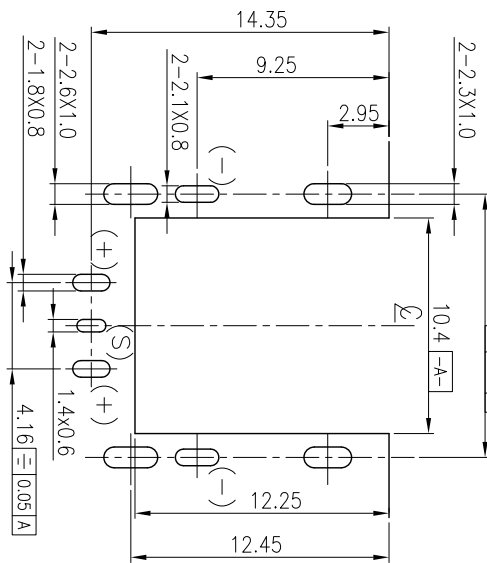
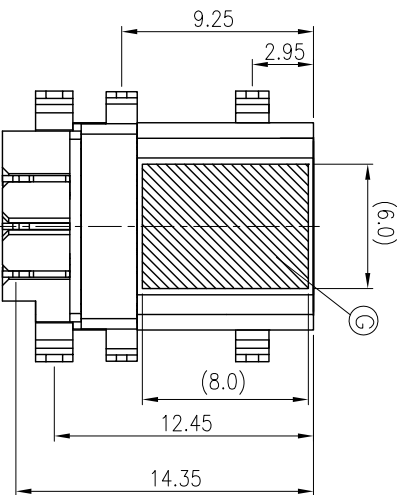
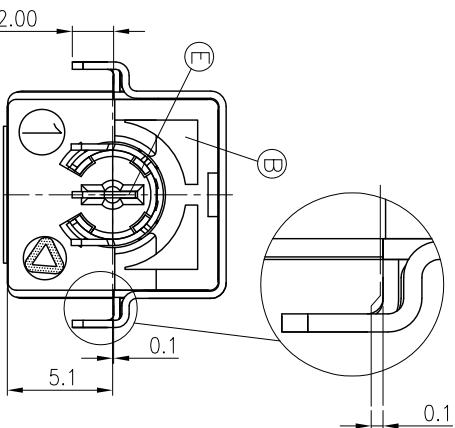
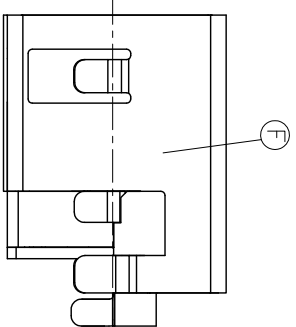
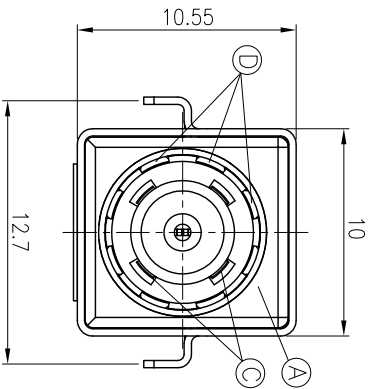
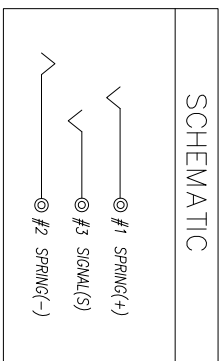


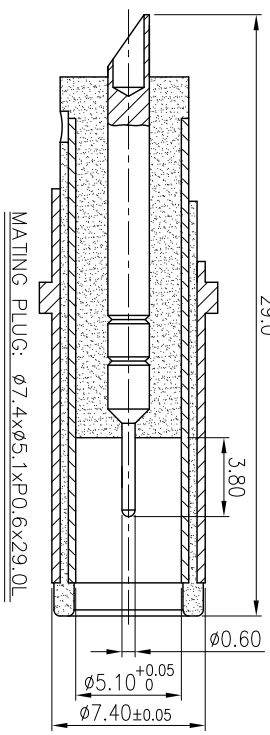
YYMMDD
DD: DAY
MM: MONTH
YY: YEAR



RECOMMENDED P.C.B LAYOUT (t=1.6mm)
TDP VIEW (Tolerance: ±0.05)

REV.	ECN NO.	OR DESCRIPTION	REVISED	DATE
F	ECN NO.1080081		JASON	2008.08.18
G	ECN NO.1090089		Even	2009.10.01
H	ECN NO.S100731		Swind	2010.07.29

- SPECIFICATIONS:
- ELECTRICAL CHARACTERISTICS:
 - 1-1. RATING: DC 42V 10A OR AC 30V 10A
 - 1-2. CONTACT RESISTANCE: 30m² MAX.(INITIAL)
 - 1-3. DIELECTRIC WITHSTANDING VOLTAGE: 150V DC FOR ONE MINUTE
 - 1-4. INSULATION RESISTANCE: 100M¹ MIN. MEASURED BY 500 VDC
 - MECHANICAL CHARACTERISTICS:
 - 2-1. INSERTION FORCE : 3.0 KGF Max.
 - 2-2. WITHDRAWAL FORCE : 0.35 KGF Min.
 - LIFE TEST: 5,000 CYCLES MIN.
 - OTHER GENERAL SPEC. TO REFER "2DC-S060-001 SPEC."
 - TO CONFORM TO SINGATRON HAZARDOUS SUBSTANCE FREE SPEC.
 - GREEN PRODUCT IDENTIFICATION MARK ON JACK:
 - GREEN PRODUCT IDENTIFICATION LABEL ON PACKAGING: **G.P. PASS**
 - FOR REFLOW SOLDERING LEAD-FREE PROCESS.
 - PACKAGING: TAPE&REEL



NO	DESCRIPTION	QTY	MATERIAL	PLATING & COLOR
G	INSULATION FILM	1	MYLAR 0.075t	TRANSPARENT
F	SHIELDING	1	COPPER ALLOY 0.35t	NICKEL PLATING
E	SIGNAL	1	COPPER ALLOY 0.3t	GOLD FLASH
D	SPRING(-)	1	COPPER ALLOY 0.3t	GOLD FLASH
C	SPRING(+)	1	COPPER ALLOY 0.3t	GOLD FLASH
B	COVER	1	HIGH TEMP THERMOPLASTIC UL94V-0	BLACK COLOR
A	HOUSING	1	HIGH TEMP THERMOPLASTIC UL94V-0	BLACK COLOR

UNLESS OTHERWISE SPECIFIED TOLERANCES

DECIMALS: ANGLES:

X : ±0.5 X : ±2°
X.X : ±0.3 X.X : ±1°
X.XX : ±0.2

Singatron Enterprise Co., Ltd.
信音企業股份有限公司

TITLE: DC POWER JACK

DWG No: 2010.07.29 PART NO: 2DC-S060-002

CHKD: Lusser SCALE: 4:1 UNIT: mm

APVD: lmy SIZE: A3 SHEET: 1 OF 1 REV: H

CUSTOMER COPY