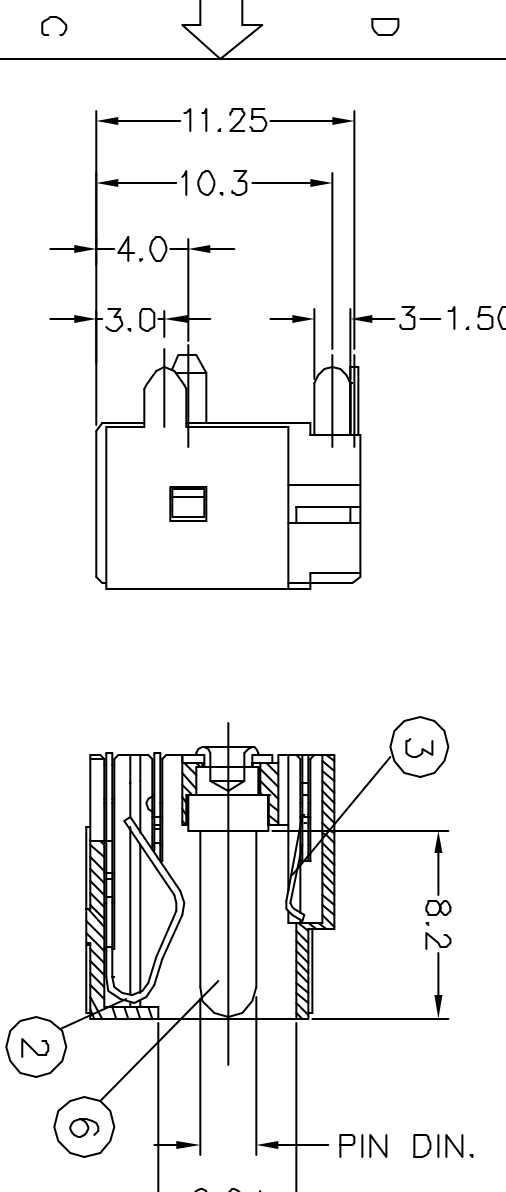
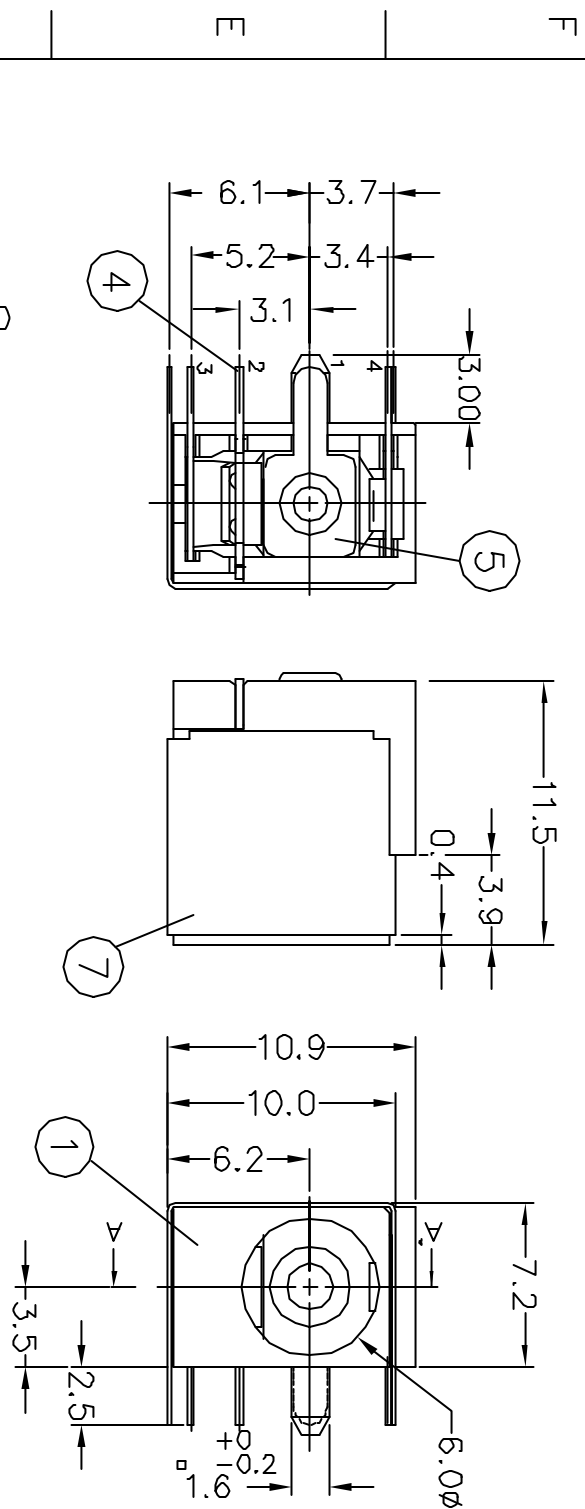


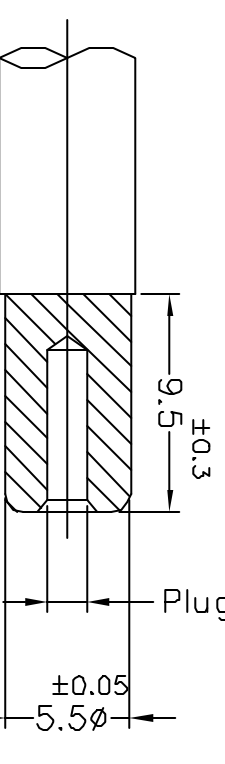
REV.	ECN NO.	OR DESCRIPTION	REVISED	DATE
E	修正公差 Plug ID: ± 0.1	5.5 $\phi \pm 0.05$	LAO	1/6-03

- SPECIFICATIONS:**
1. RATING: DC 20V 7A
 2. INSERTION FORCE: 0.4KG-3.0KG WITHDRAWAL FORCE: 0.4KG-3.0KG
 3. INSULATION RESISTANCE BETWEEN ANY ADJACENT TERMINALS SHALL NOT BE LESS THAN 100 MEGOHMS BY 500 VOLTS MEGGER.
 4. JACK SHALL WITHSTAND 250 VOLTS BETWEEN ANY ADJACENT TERMINAL FOR ONE MINUTE.
 5. CONTACT RESISTANCE SHALL NOT EXCEED 0.03 Ω
 6. JACK SHALL WITHSTAND 5,000 CYCLES OF INSERTION AND WITHDRAWAL WITH TESTING PLUG, AND CONTACT RESISTANCE SHALL NOT EXCEED 0.1 Ω
 7. MEASURING CONDITION:
TEMPERATURE: FROM 5°C TO 35°C.
RELATIVE HUMIDITY: FROM 40% TO 85%
 8. ENVIRONMENTAL SPECIFICATIONS:
8.1 HUMIDITY TEST: HUMIDITY 90% TO 95% TEMPERATURE 40°C \pm 2°C FOR 96 HOURS.
8.2 HEAT TEST: TEMPERATURE 70°C \pm 2°C (HUMIDITY BELOW 50%) FOR 96 HOURS.
8.3 COLD TEST: TEMPERATURE -40°C \pm 2°C FOR 96 HOURS.
 10. SOLDERABILITY TEST: THE TERMINATION IS AT LEAST 95% COVERED BY A CONTINUOUS NEW SOLDER COATING.
- TEST CONDITION: DIP IN MOLTEN SOLDER FOR 5 Sec. AT 245 \pm 5°C (TERMINATION SHALL BE IMMERSED IN FLUX BEFORE TEST)
10. PACKAGE: TAPPING REEL



A-A' SECTION

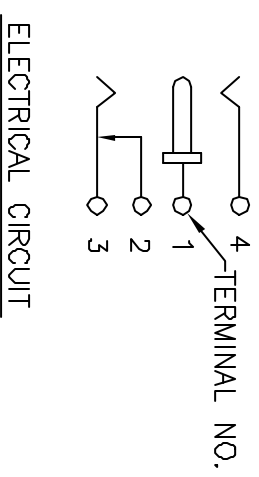
GAUGE PLUG



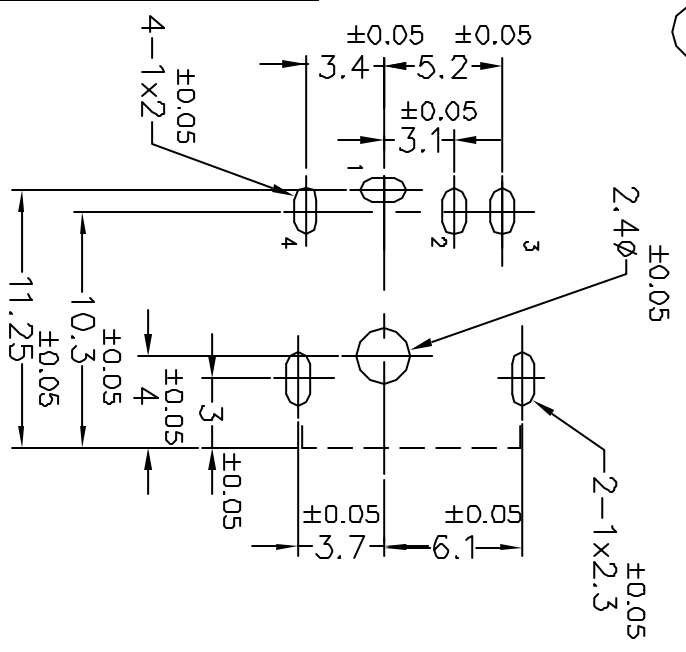
ORDERING CODE:

2DC-S726 201

PART NO.	PIN DIA.	Plug ID.
B	2.5 ϕ ^{+0.1} _{-0.1}	2.6 ϕ ^{+0.1} _{-0.1}
D	2.0 ϕ ^{+0.1} _{-0.1}	2.1 ϕ ^{+0.1} _{-0.1}
C	2.35 ϕ ^{+0.1} _{-0.1}	2.45 ϕ ^{+0.1} _{-0.1}
I	1.65 ϕ ^{+0.1} _{-0.1}	1.75 ϕ ^{+0.1} _{-0.1}



ELECTRICAL CIRCUIT



RECOMMENDED P.C.B LAYOUT
SOLDERING SIDE

NO	DESCRIPTION	QTY	MATERIAL	PLATING & COLOR
7	SHIELDING	1	BRASS STRIP 0.2t	NICKEL PLATING
6	PIN	1	BRASS BAR	NICKEL PLATING
5	TERMINAL	1	BRASS STRIP 0.3t	SILVER PLATING
4	SHUNT TERMINAL	1	BRASS STRIP 0.3t	SILVER PLATING
3	TIP SPRING B	1	COPPER ALLOY 0.25t	SILVER PLATING
2	TIP SPRING A	1	COPPER ALLOY 0.3t	SILVER PLATING
1	BODY	1	HIGH TEMP. THERMOPLASTIC UL 94V-0	BLACK COLOR

UNLESS OTHERWISE SPECIFIED TOLERANCES

Singaton Enterprise Co., Ltd.
信音企業股份有限公司

DECIMALS:	ANGLES:	TITLE
X : ± 0.3	X : $\pm 2^\circ$	DC POWER JACK
X.X : ± 0.2	X.X : $\pm 1^\circ$	PART NO. 2DC-S726 201
X.XX : ± 0.1		SCALE: 3/1 UNIT: MM
		APVD MM 1/8-03 SIZE: A3 SHEET: 1 OF 1 REV: E